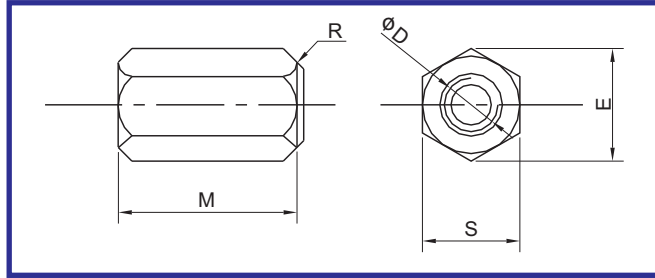


## ▶ Hex Nut



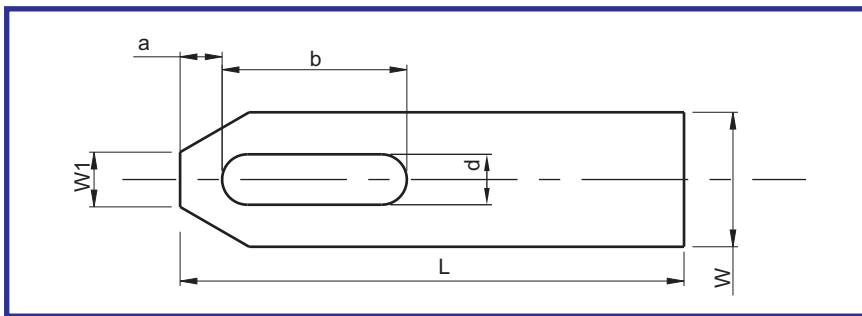
**Material :-** En8d  
**Hardness :-** Core 28-30 HRC (Toughened)  
**Surface Treatment :-** Blackodised

Code	D	M	D1	S	E	R
Hex Nut M8	M8	12	9	13	15.0	11
Hex Nut M10	M10	15	11.5	17	19.6	15
Hex Nut M12	M12	18	14	19	21.9	17
Hex Nut M16	M16	24	18	24	27.7	22
Hex Nut M20	M20	30	22	30	34.6	27
Hex Nut M24	M24	36	26	36	41.6	32



**Order Type :-** Code  
**Example :-** Hex Nut M24

## ▶ Strap Clamp



**Material :-** C45  
**Surface Treatment :-** Blackodised



**Order Type :-** Code  
**Example :-** M12X125

Code	For Bolts of	d	L	a	b	h	w	w1
M8X60	M 8	9	60	13	22	12	25	10
M10X80	M10	11	80	15	30	16	30	12
M12X100	M 12	14	100	21	40	20	40	14
M12X125	M 12	14	125	21	50	20	40	14
M16X125	M 16	18	125	26	45	25	50	18
M16X160	M 16	18	160	26	65	25	50	18
M20X160	M 20	22	160	30	60	30	60	22
M20X200	M 20	22	200	30	80	30	60	22
M24X250	M 24	26	250	35	105	40	70	26